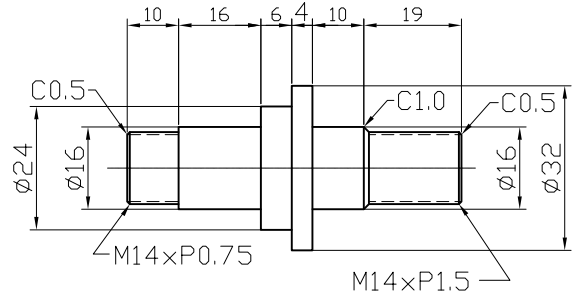
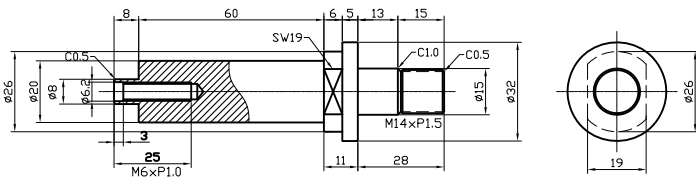
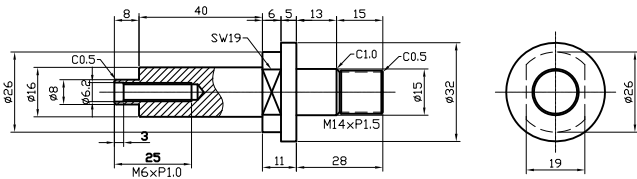
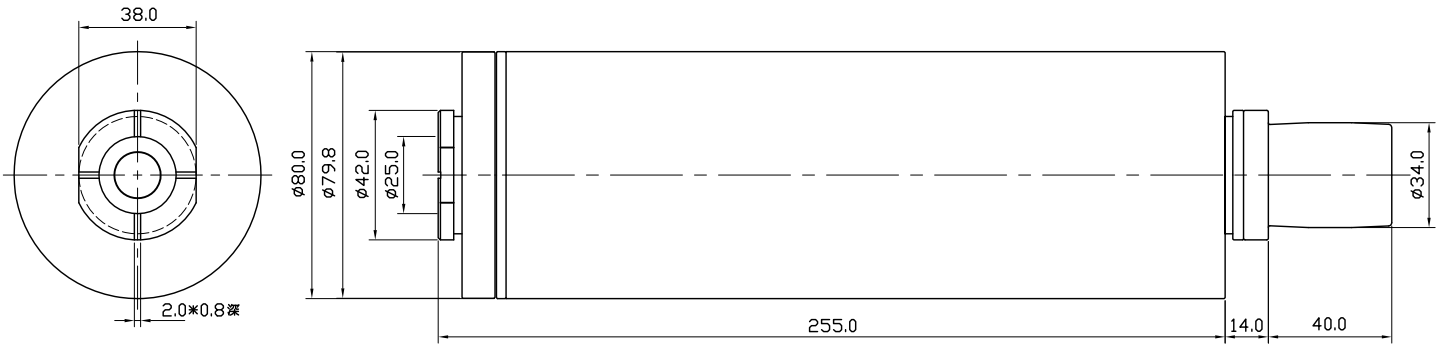
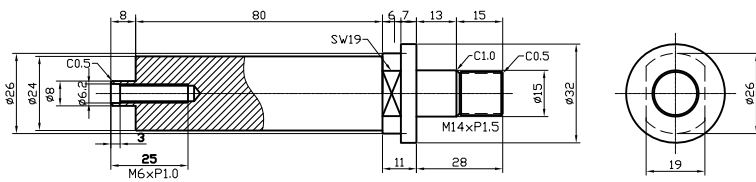


SUPER PRECISION SPINDLE



使用ER11 筒夾



Specification	Units
Spindle Type (主軸型式)	EX8020 內徑研磨主軸
Bearing Type (使用軸承)	7205
Maximun Speed (最高轉速)	20000 R.P.M
Maximun Dynamic Runout (偏擺精度)	0.002 mm
Body Size (外部尺寸)	80 mm (h6)
Weight (重量)	13.5 kg